

1

2

To Download Modem Image 'Package' (Unicast Mode)

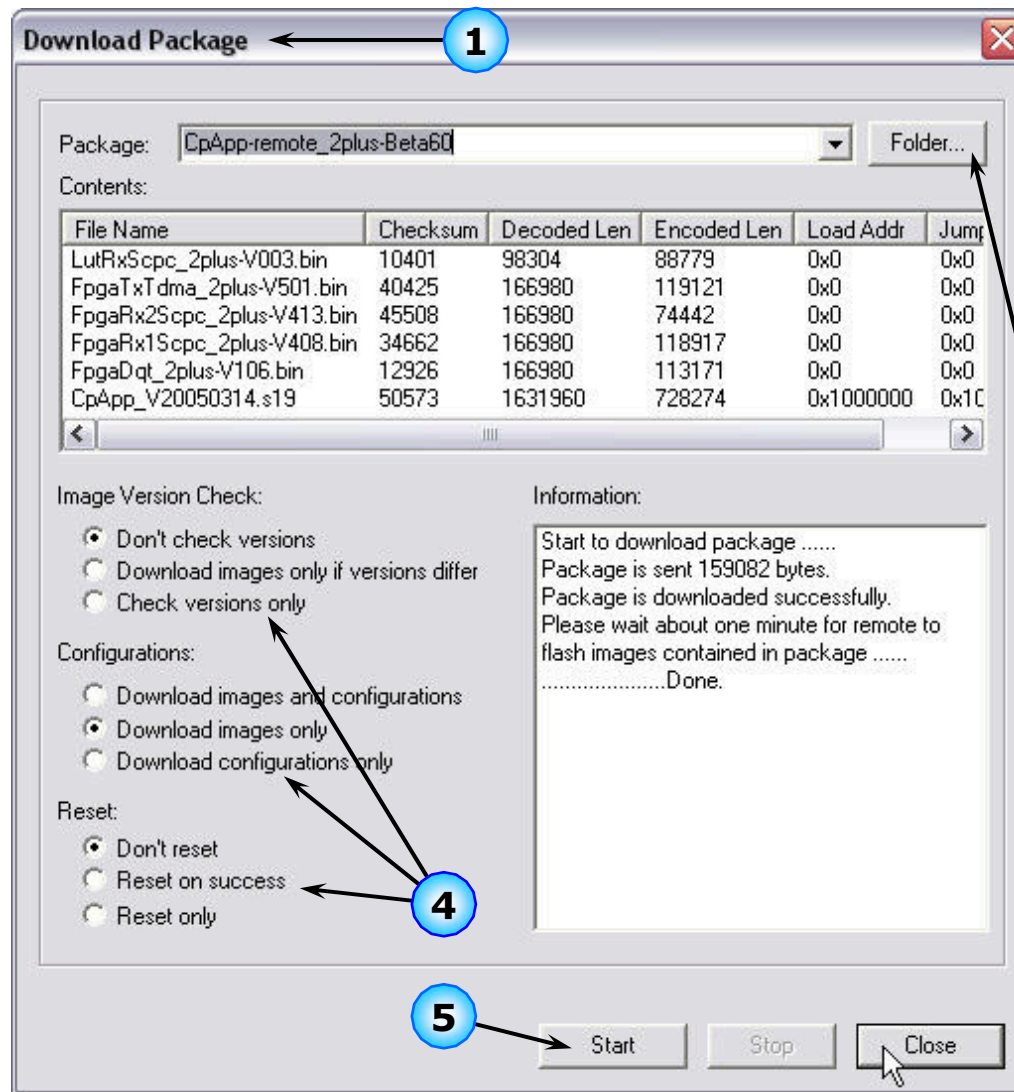
- Right Click on Component Tree Menu to "Download Package" or . . .
- Select "Configure", "Download Package" from iSite Menu

Download package to the selected item

iSite Tree View

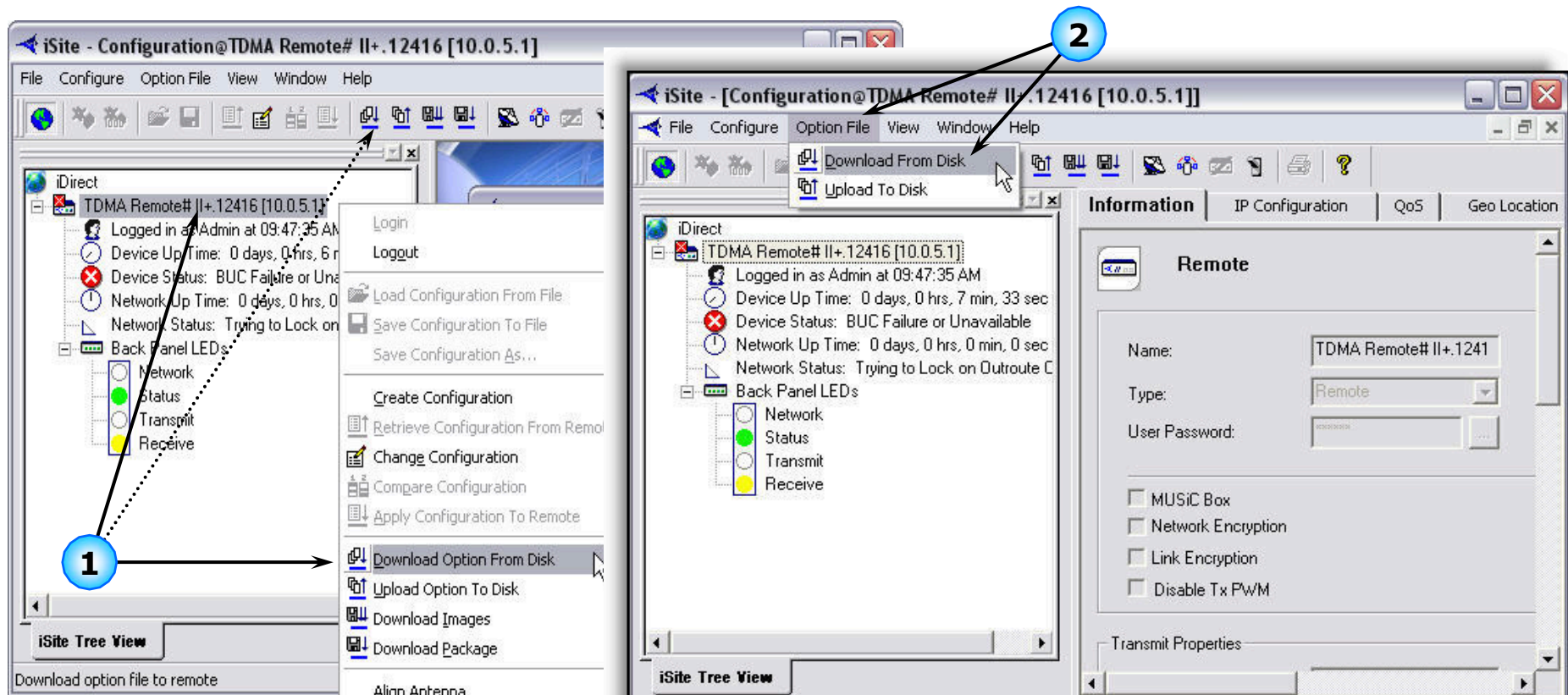
Download package to the selected item

Information Rate: 474.487 kbps Error Correction: TPC-676/1024 [66] Scrambling: IDR

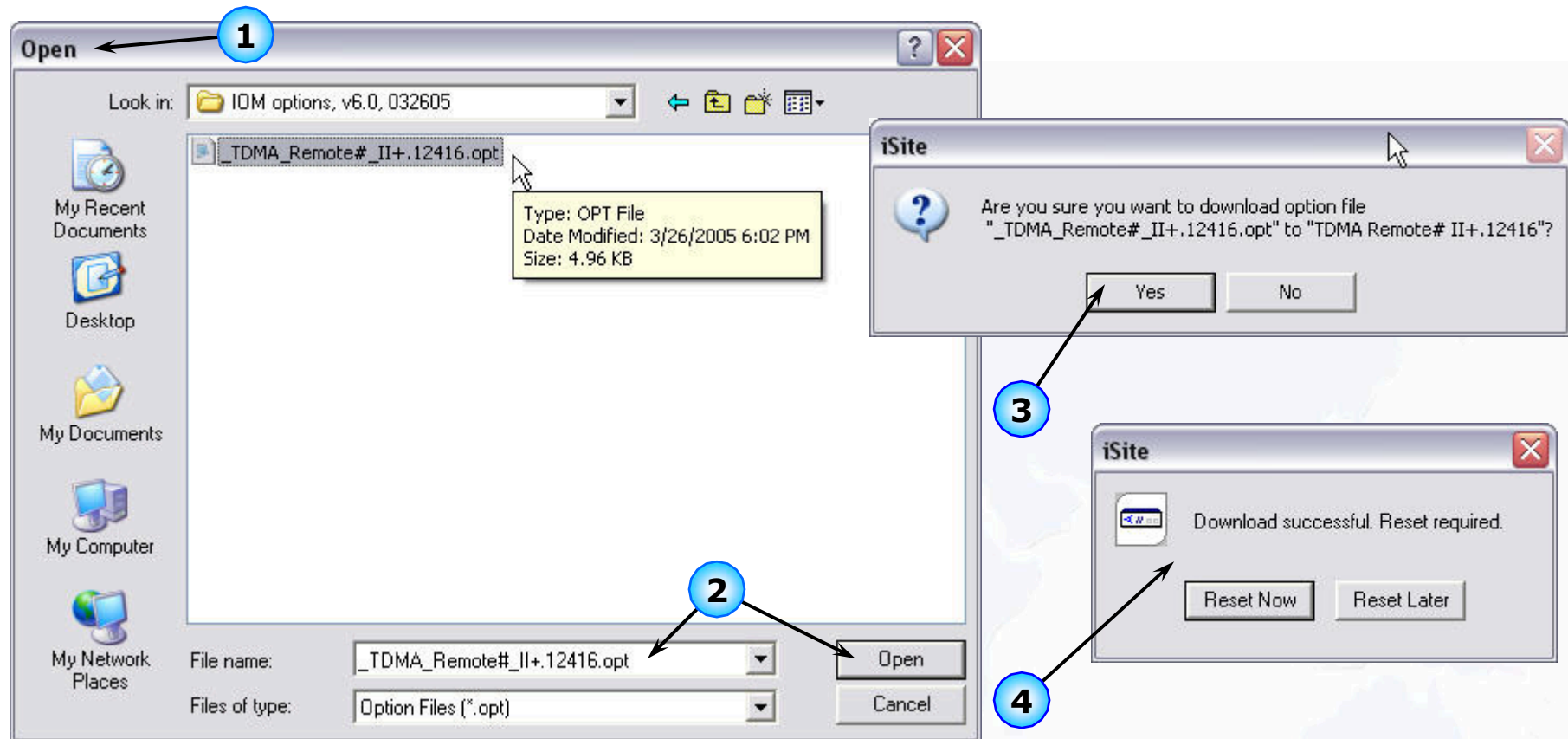


1. "Download Package" Window Opens
2. Select "Folder" Button to Locate Correct Package
3. Identify Folder in Browse Window; Select "OK"
4. Select Appropriate Option for Download Process –
5. Select "Start" to Begin Package Download

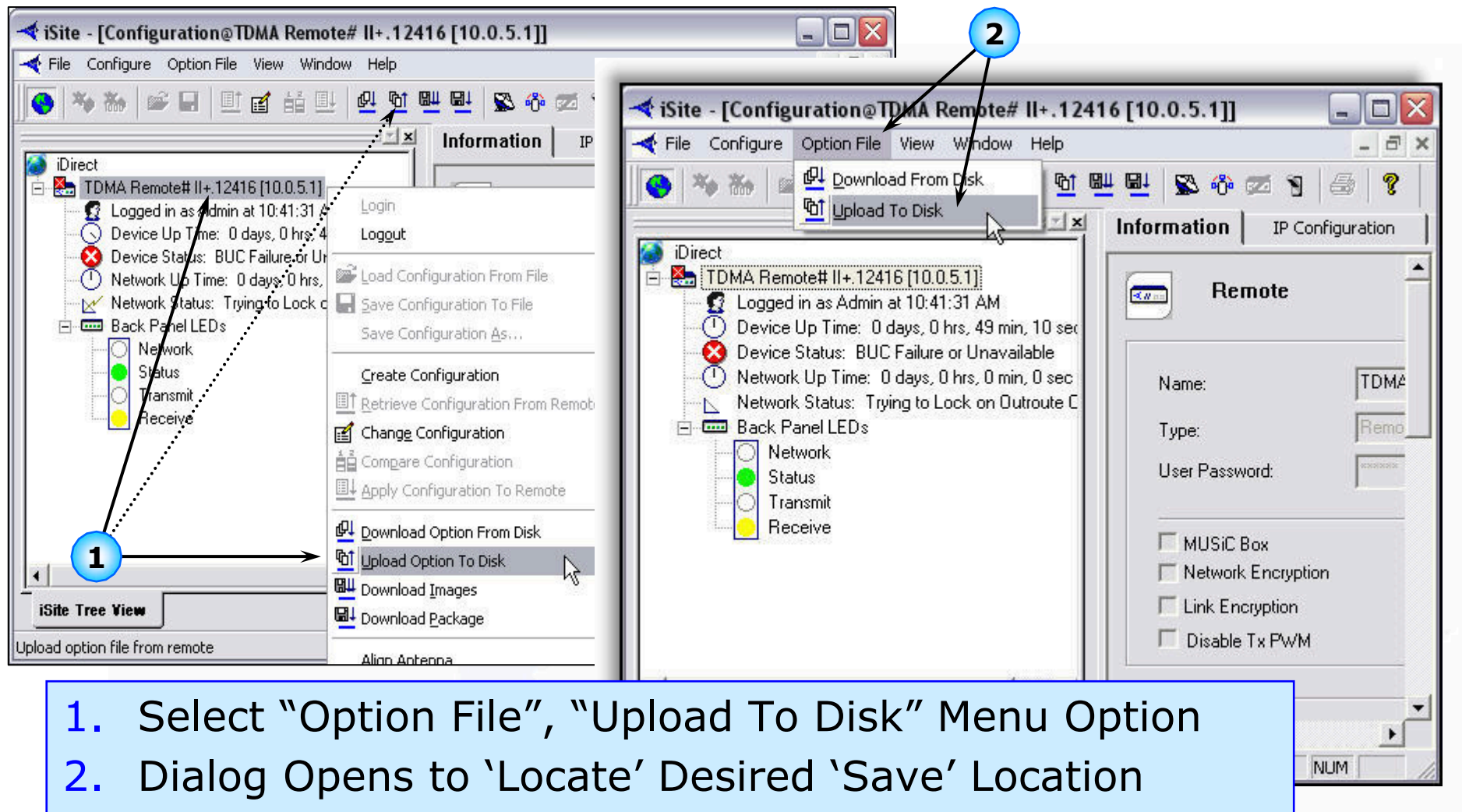




1. Right Click on Remote; Select "Download Option From Disk" from Component Tree Menu
2. Alternatively Select "Option File" from iSite Menu; Select Download From Disk



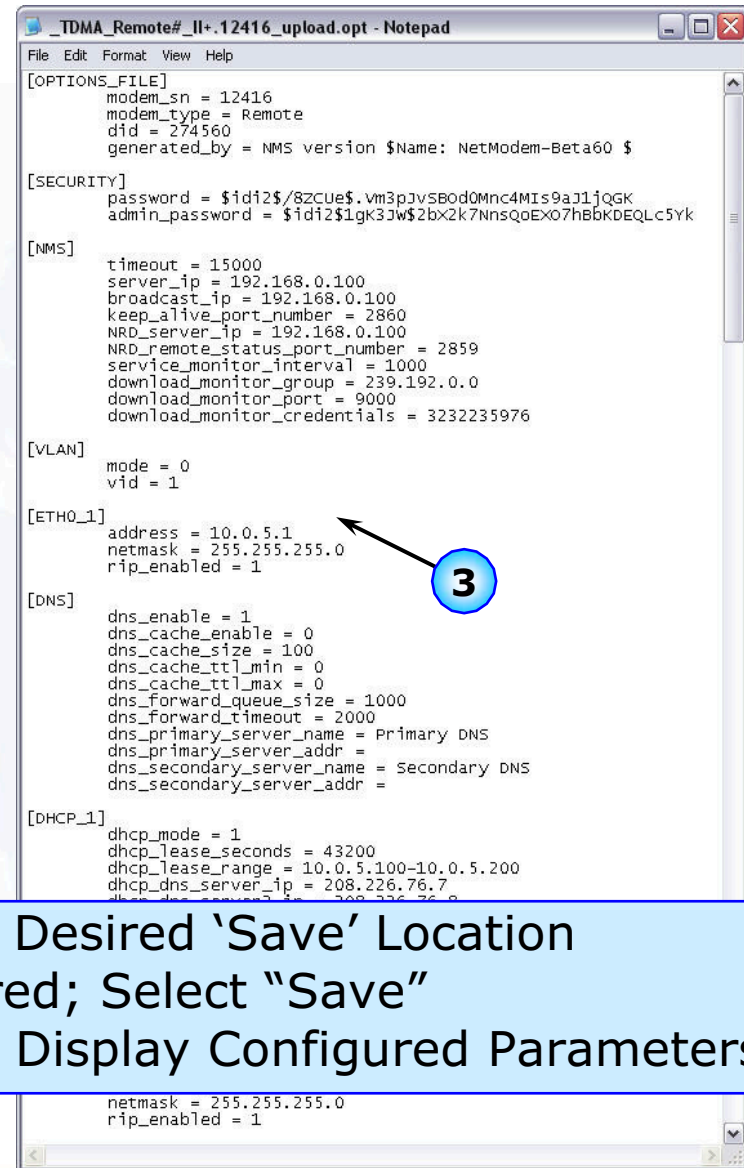
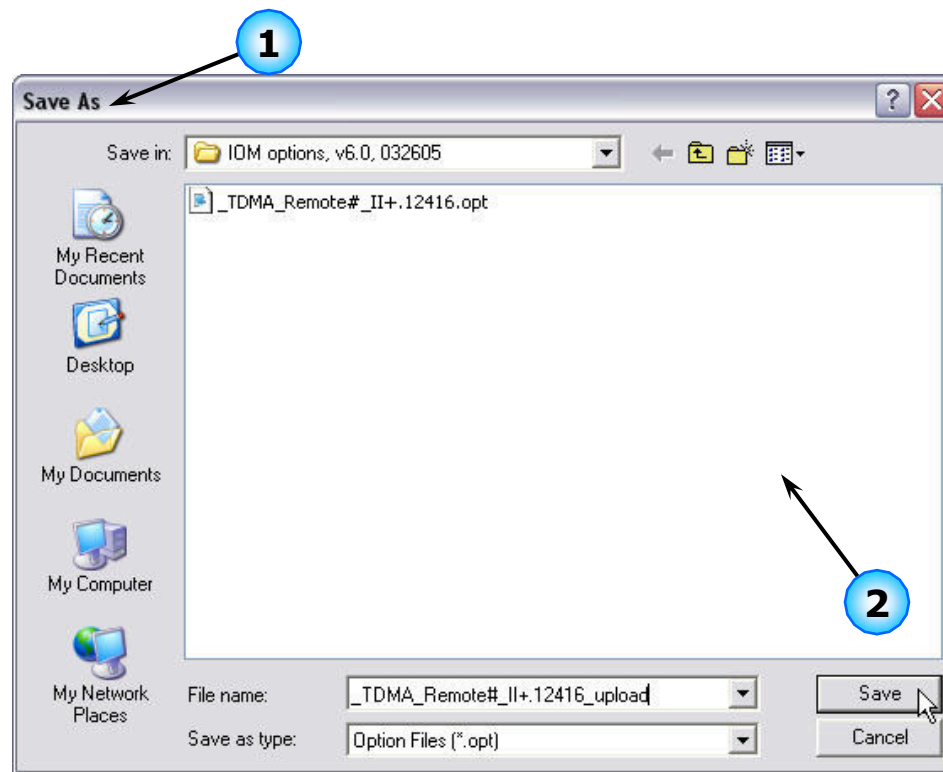
1. Dialog Opens to 'Locate' Desired/Current Option File
2. Select File from List (Double Click, or Highlight and Select "Open")
3. iSite Requests Confirmation of Download Request; Click "Yes"
4. Download Reports Success; NetModem can be Reset Now/Later



1. Select "Option File", "Upload To Disk" Menu Option

2. Dialog Opens to 'Locate' Desired 'Save' Location

3. Option File 'Opens' to Display Configured Parameters



1. "Save As" Dialog Opens to 'Locate' Desired 'Save' Location
2. Name/Rename Option File as Desired; Select "Save"
3. Option File 'Opens' (in Notepad) to Display Configured Parameters